

## How to Use Extension Tubes with Secure Set Spray Foam

Secure Set Spray Foam can be used to fill deep voids using extension tubing up to 50 feet long.

You will want to prepare multiple extensions based on the depth of the void, because once the product stops flowing for as little as 15 seconds, it can harden in the tube.

Please watch the videos on our website for complete details.

Items you will need:

- 1/2" CPVC tubing in lengths to reach the furthest void
- 1/2" CPVC connectors and cement to join multiple lengths
- 1" wide fiber reinforced strapping tape

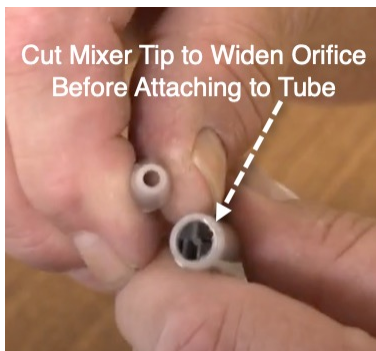
**Warning:**  
Failure to properly seal connections can result in product blowback.

Steps to create extensions

Step 1: Cut CPVC tubing to desired length



Step 2: Cut end of mixer nozzle



Step 3: Wrap mixer end with strapping tape 5 times



Step 4: Insert mixer fully into tubing



Step 4: Firmly apply 5" of tape parallel to tubing twice on each side of mixer



Step 5: Wrap tape around mixer and continue down tubing about 5 inches



Using extensions tubes can decrease the yield of the product. Testing with a 50' extension significantly reduced the volume of foam and increased the density. Even 10' extensions have been found to reduce the yield. It is difficult to estimate the reduced yield due to variables including product, ground, and ambient temperatures.